



Nebraska Society of Professional Engineers

A state society of the National Society of Professional Engineers
Eastern Chapter

October 2010

2010-2011

BOARD OF DIRECTORS

PRESIDENT

Tony Egelhoff

PRESIDENT-ELECT

Bob Matlock

VICE-PRESIDENT

Paul Vovk

SECRETARY

Everett Owen

TREASURER

Tim Yager

PAST PRESIDENT

Matt Sutton

CHAPTER DIRECTORS

Bob Matlock

John Coolidge

Katie Underwood

Terry Morrison

STATE DIRECTORS

Matt McFadden

Morgan Sykes

Chris Cain

COMMITTEES

AWARDS/YOUNG ENGINEER

Steve McCullough

HISTORICAL

Ed Mead

INTERSOCIETY/E-WEEK

John Coolidge

LEGISLATIVE/CIVIC AFFAIRS

Dan Thiele

MATHCOUNTS

Paul Woodward

MEMBERSHIP

Matt Kruse

PROGRAMS

Justin Mohlman

PUBLICITY

Open

SCHOLARSHIPS

Brock Beran

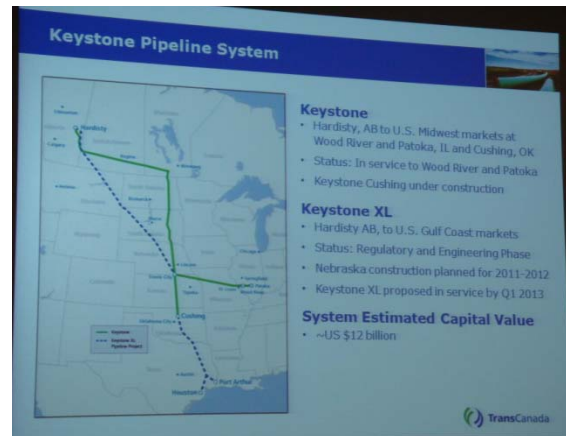
6 Months Free

NSPE Membership applications may be obtained at

www.nspenebraska.org

TransCanada Gives Back

I want to start with recognizing TransCanada's Keystone Pipeline for their generous \$500 donation to our MathCounts competition. At our September Chapter meeting, TransCanada's Jeff Rauh and Jim Krause presented on the Keystone Pipeline System. The topics ranged from locations of the pipelines, the safety and reliability of their system, and the economic benefit that is brought to the state of Nebraska. We had a great showing from our members, with several probing questions for discussion. Once again, NSPE would like to thank TransCanada's Keystone Pipeline and their representatives for their time and support.



Montclair's Destination Imagination Team

Last Spring our Eastern Chapter Board agreed to donate \$1000 to the Montclair Destination Imagination Team to help them attend the Global Finals at the University of Tennessee-Knoxville. The children and their parents spent a week interacting with other teams from around the world.

The team competed in the structural challenge with 62 other elementary teams. Although they did not match their previous best of 600lbs, they impressed the
(continued)

Upcoming Events

Tues., Nov 23rd: Chapter Mtg.
Welcome New Registrants
Re-Purposing Grain Silos in Omaha

Joint NSPE/IEEE Mtg
December – Date TBD

Non-members welcome!!

Scott Conference Center
6450 Pine Street
11:30 a.m. – 1:00 p.m. +/-
\$17.00
Lunch and PDHs included

judges with their knowledge of why their structure did not hold as much. They were also praised for their enthusiasm and energy. The team's "Thank You" letter and additional photos can be found on the state's website under the Eastern Chapter tab.

We congratulate Montclair's Destination Imagination Team on their accomplishments and wish them luck in their future competitions. We also encourage their continued interest in the field of engineering.

Volunteers Needed

**School Mentors for
Future City Competition**

Judges for Competition

www.futurecity.org

Contact:

Dave Nielsen

[dneilsen@oaconsulting.com](mailto:dnielsen@oaconsulting.com)

402.341.1116



Pictured is the Montclair Destination Imagination Team. From left to right: (front) Gracie, Grace, Caroline, Sophia, and Charlie (back) Cecelia.

High Speed Rail In Our Future?

It may not be that far away. Will Sharp, of HDR, presented on High Speed Intercity Passenger Rail between Chicago and Omaha at the October Joint NSPE/LOCATE meeting. The preliminary analysis and NEPA documentation is underway. Primary to the effort will be obtaining agreements between all the stakeholders, including the private rail companies, because it would be too cost prohibitive to build new track. Critical to success will be assuring the passenger rail will receive the priorities they need, while the private freight business is able to maintain their flexibility. This future route could see 2-4 trips per day between Omaha and Chicago, depending on demand, and travel at speeds of up to 90 mph.

